

FIGURES

ASSOCIATED WITH THE HsB RDS PERMIT MODIFICATION APPLICATION

Figure 1. Stage 1 HsB RDS

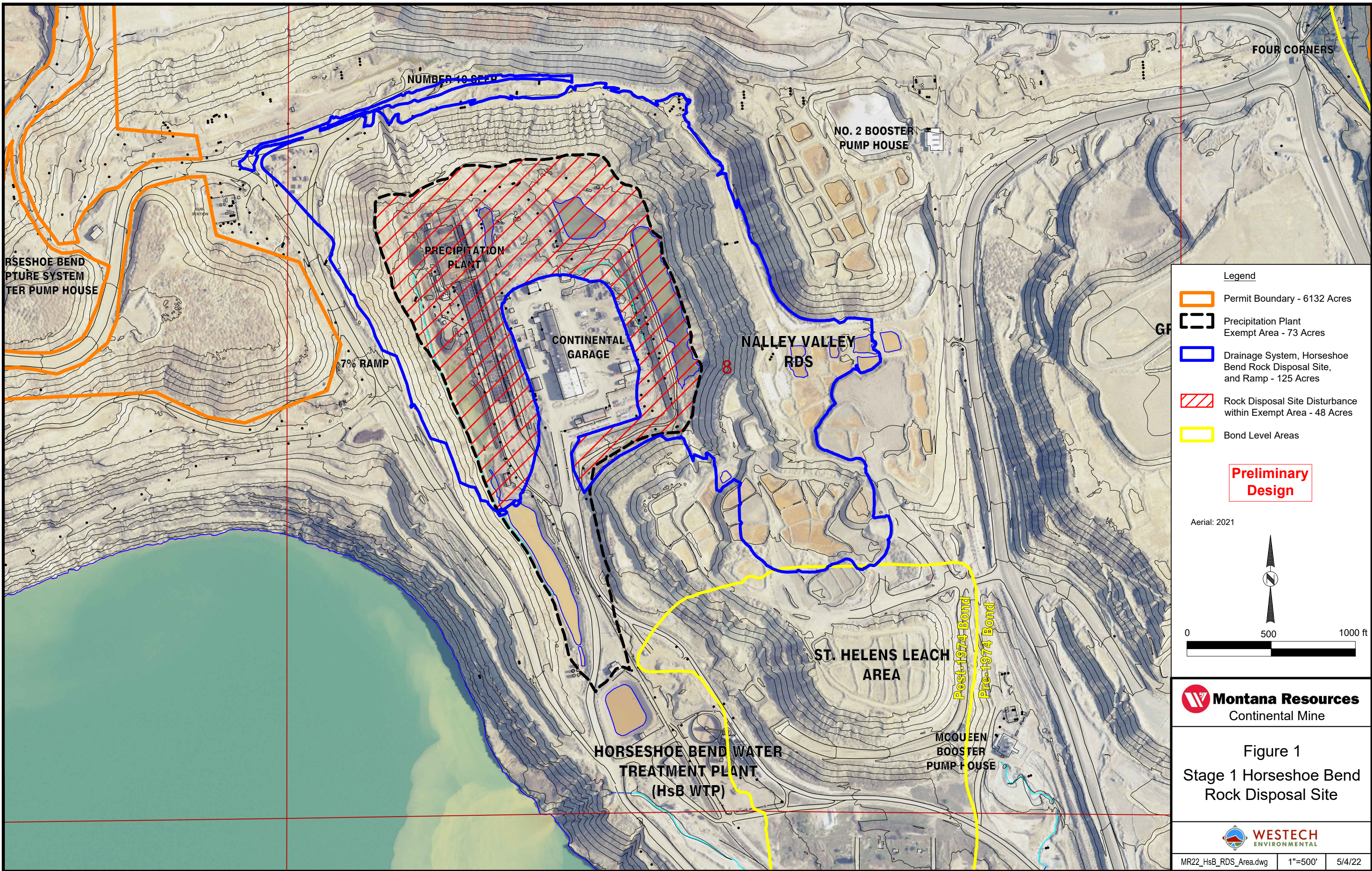
Figure 2. HsB RDS Stage 1 Drainage System Phased Construction Sequence

Figure 3. Stage 1 HsB RDS Post-Closure Topography

Figure 4. HsB RDS Cross-Section Locations

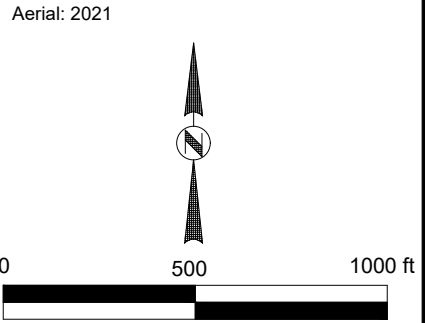
Figure 5. Cross-Section A-A¹ HsB RDS Looking North

Figure 6. Cross-Section B-B¹ HsB RDS Looking East



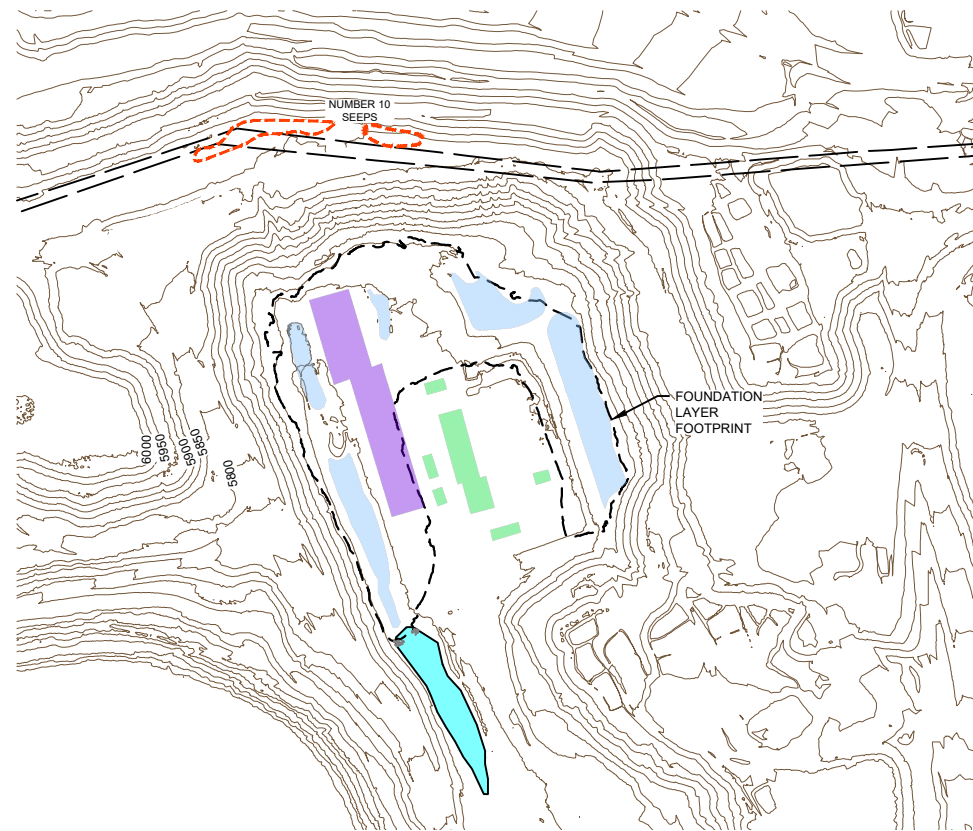
- Legend**
- Permit Boundary - 6132 Acres
 - Precipitation Plant Exempt Area - 73 Acres
 - Drainage System, Horseshoe Bend Rock Disposal Site, and Ramp - 125 Acres
 - Rock Disposal Site Disturbance within Exempt Area - 48 Acres
 - Bond Level Areas

Preliminary Design

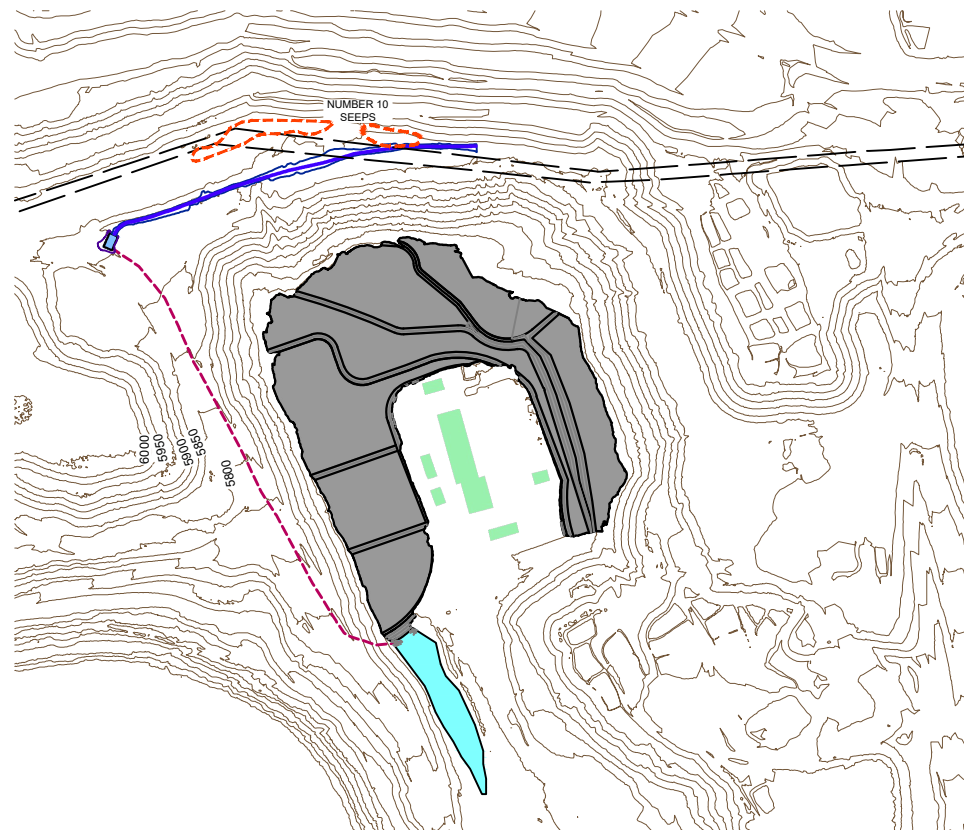


Montana Resources
Continental Mine

Figure 1
Stage 1 Horseshoe Bend Rock Disposal Site



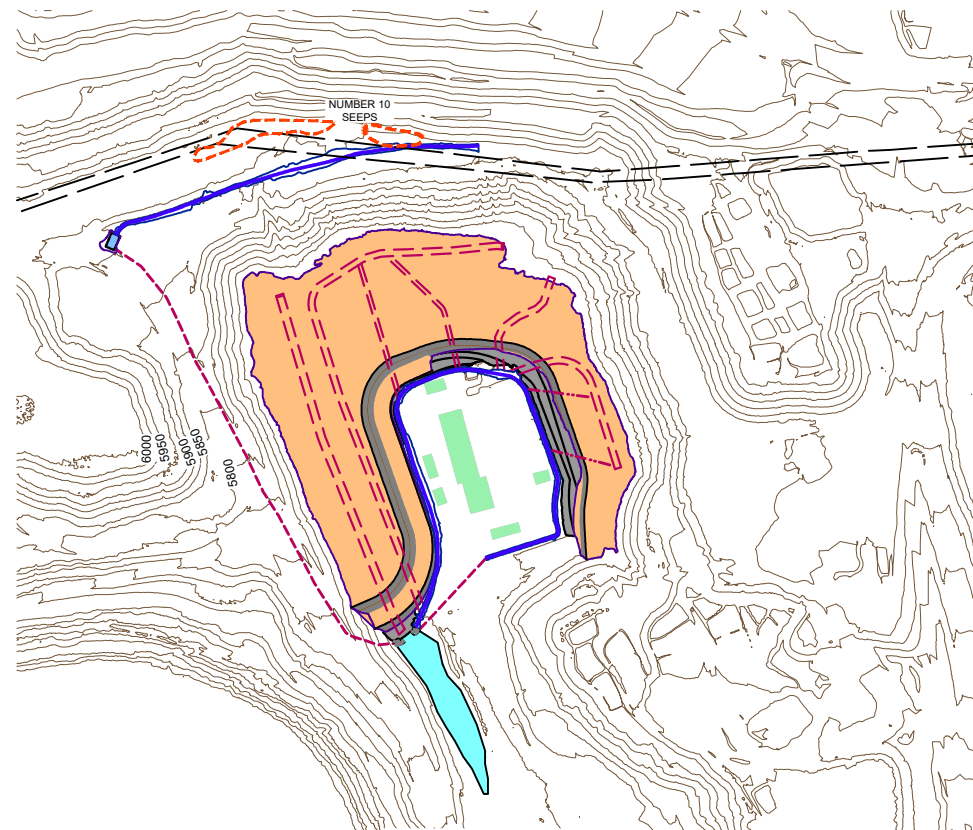
PLAN
PHASE 1 - FOUNDATION PREPARATION



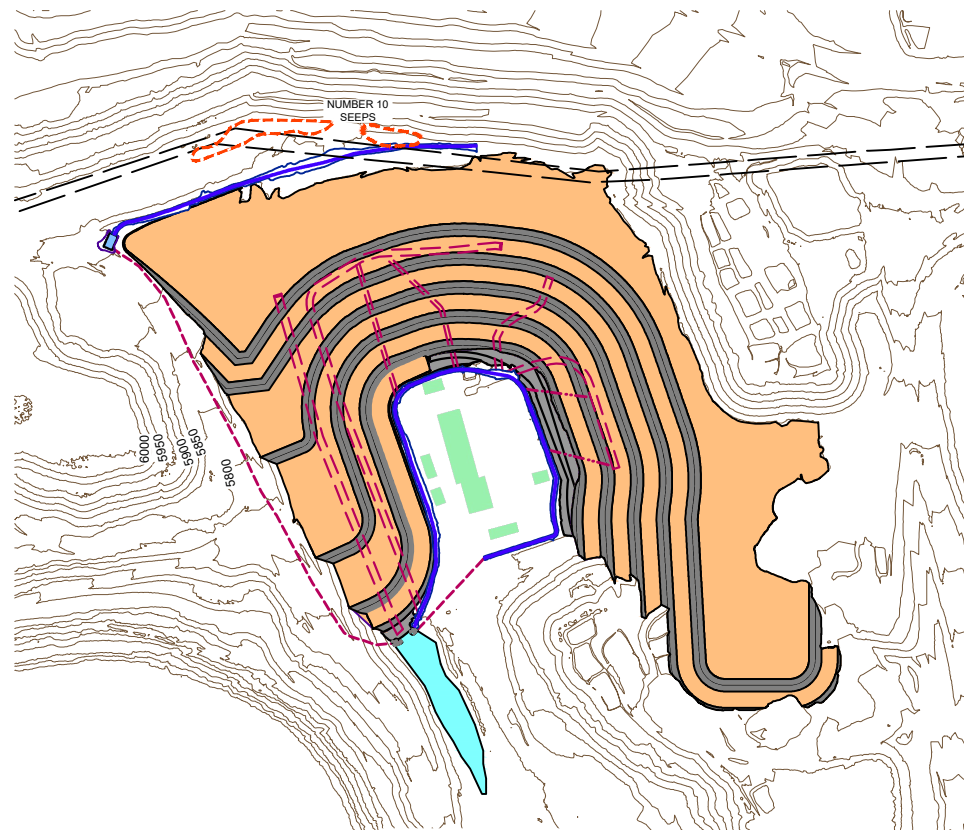
PLAN
PHASE 2 - FOUNDATION LAYER GRADING



PLAN
PHASE 3 - ROCK DRAINS AND DITCHES



PLAN
PHASE 4 - EL 5,700 LIFT



PLAN
PHASE 5 - EL 5,900 LIFT

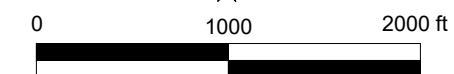
LEGEND:

- RETAINED BUILDINGS
- RETAINED HORSESHOE BEND POND
- DRAIN DOWN PONDS
- REMOVED BUILDINGS
- FOUNDATION LAYER
- ROCK DISPOSAL SITE
- PRIMARY ROCK DRAIN (D#)
- BURIED PRIMARY ROCK DRAIN
- SECONDARY ROCK DRAIN
- SURFACE WATER DITCH (SWD#)
- PIPELINE
- HIGH VOLTAGE TRANSMISSION LINE

NOTES:

1. COORDINATE SYSTEM AND ELEVATIONS ARE BASED ON ANACONDA MINE GRID.
2. TOPOGRAPHY PROVIDED BY MONTANA RESOURCES, LLP, AUGUST 2021.
3. RDS SHOWN IS CONCEPTUAL ONLY. FINAL GEOMETRY SUBJECT TO MATERIAL AVAILABILITY.

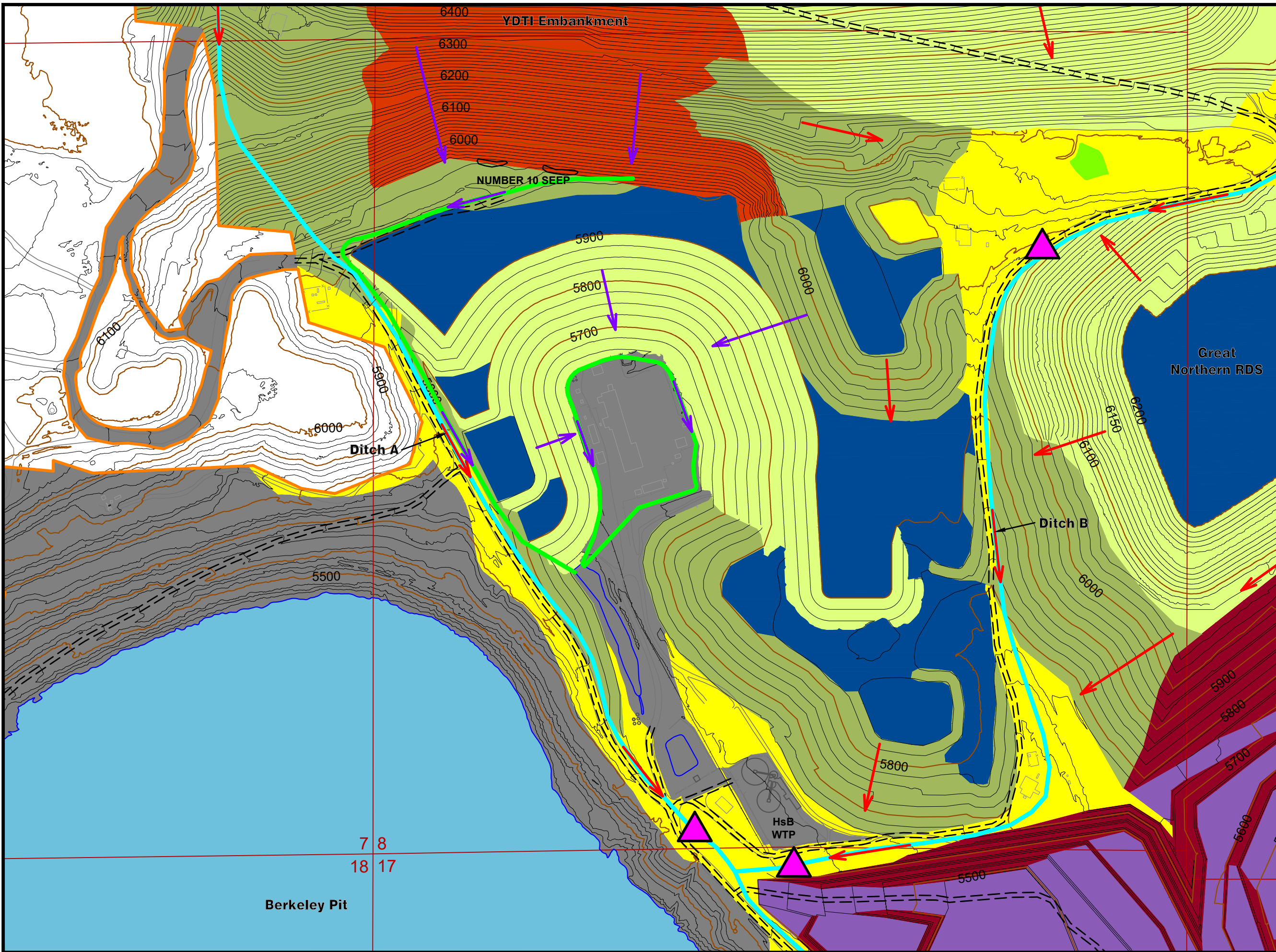
**Preliminary
Design**



Adapted from: **Knight Piésold**
CONSULTING
Horseshoe Bend Rock Disposal Site
Stage 1 Drainage System Report

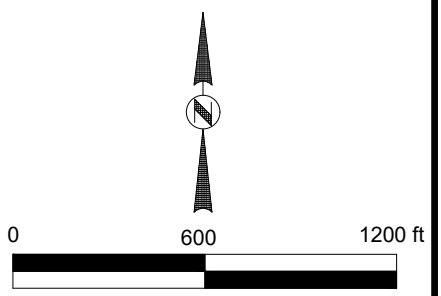
Montana Resources
Continental Mine

Figure 2
Horseshoe Bend
Rock Disposal Site
Stage 1 Drainage System
Phased Construction
Sequence



- LEGEND**
- Permit Boundary
 - Pit Bench / Ramp
 - Pit Highwall
 - Pit Water
 - RDS Top / Bench
 - 3H:1V Slope
 - 2.7H:1V Slope
 - 2H:1V Slope
 - Miscellaneous Disturbances 20H:1V to 3H:1V
 - Exempt / BMFOU / GMMIA Areas
 - Existing Reclamation
 - Stormwater Drainage Ditch
 - Horseshoe Bend Collection Ditch
 - Stormwater Sump
 - Stormwater Runoff Flow Direction
 - Horseshoe Bend Collection Flow Direction
 - Monitoring / Access Road

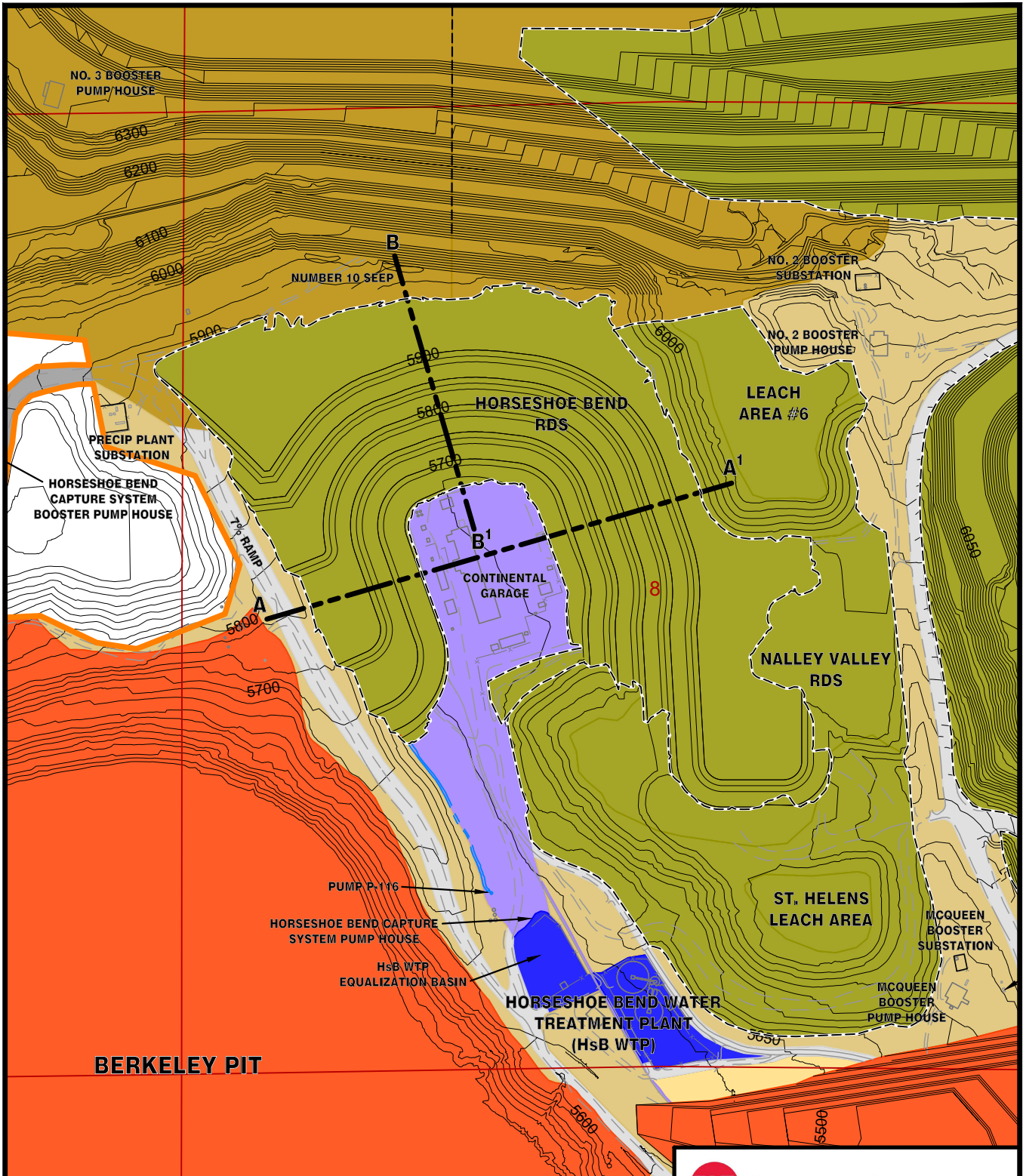
Preliminary Design



Montana Resources
Continental Mine







Figure 3
Stage 1 Horseshoe Bend
Rock Disposal Site
Post-Closure Topography



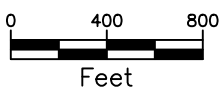


BERKELEY PIT

LEGEND

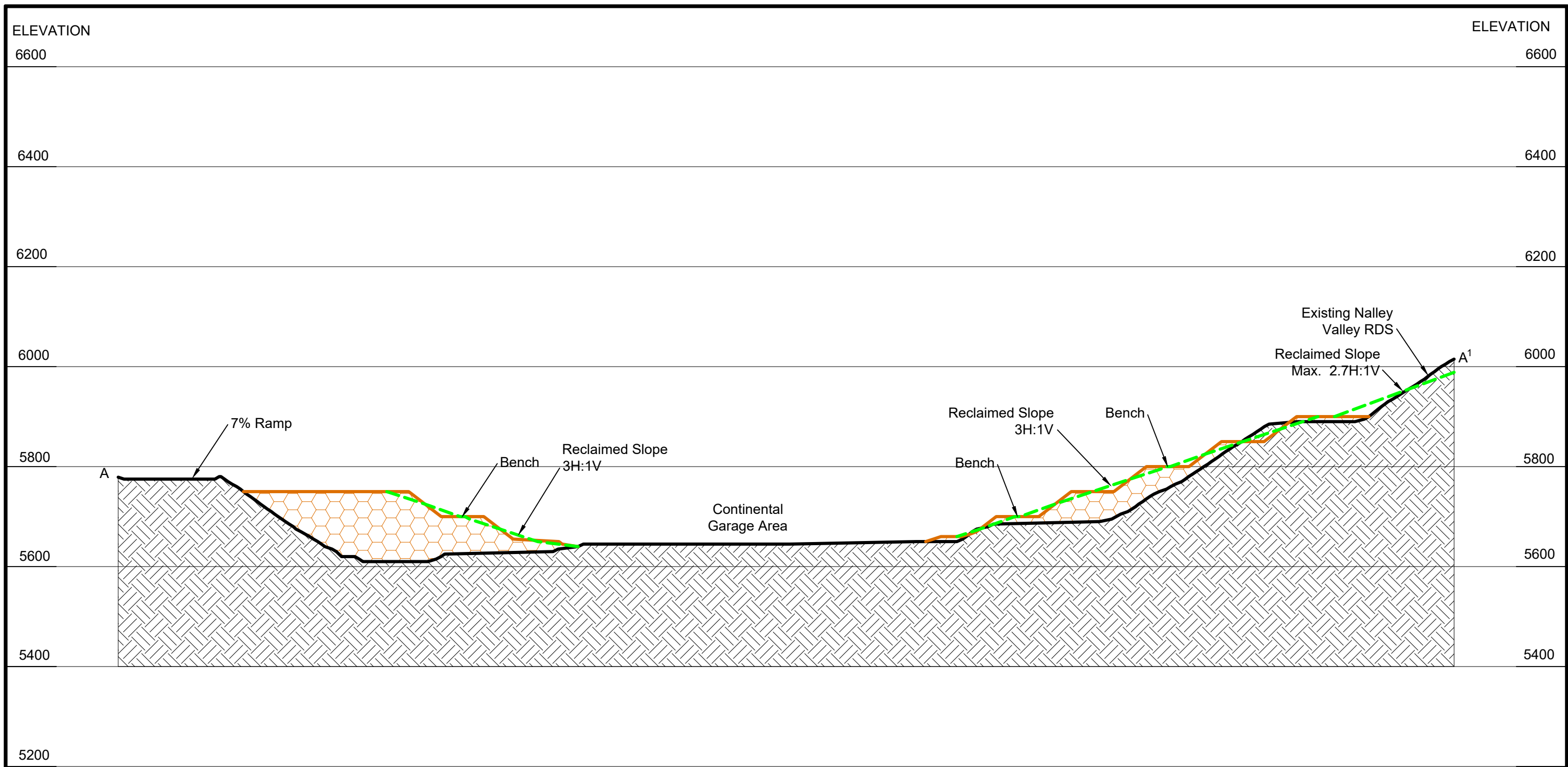
-  Permit Boundary
-  Rock Disposal Site (RDS)
-  YDTI Embankment
-  Pit
-  Precipitation Plant Exempt Area
-  Miscellaneous Disturbance




Preliminary Design



 **Montana Resources**
CONTINENTAL MINE

Figure 4
Horseshoe Bend
Rock Disposal Site
Cross-Section Locations



-  2022 TOPOGRAPHY
-  PROPOSED TOPOGRAPHY
-  RECLAIMED SLOPE



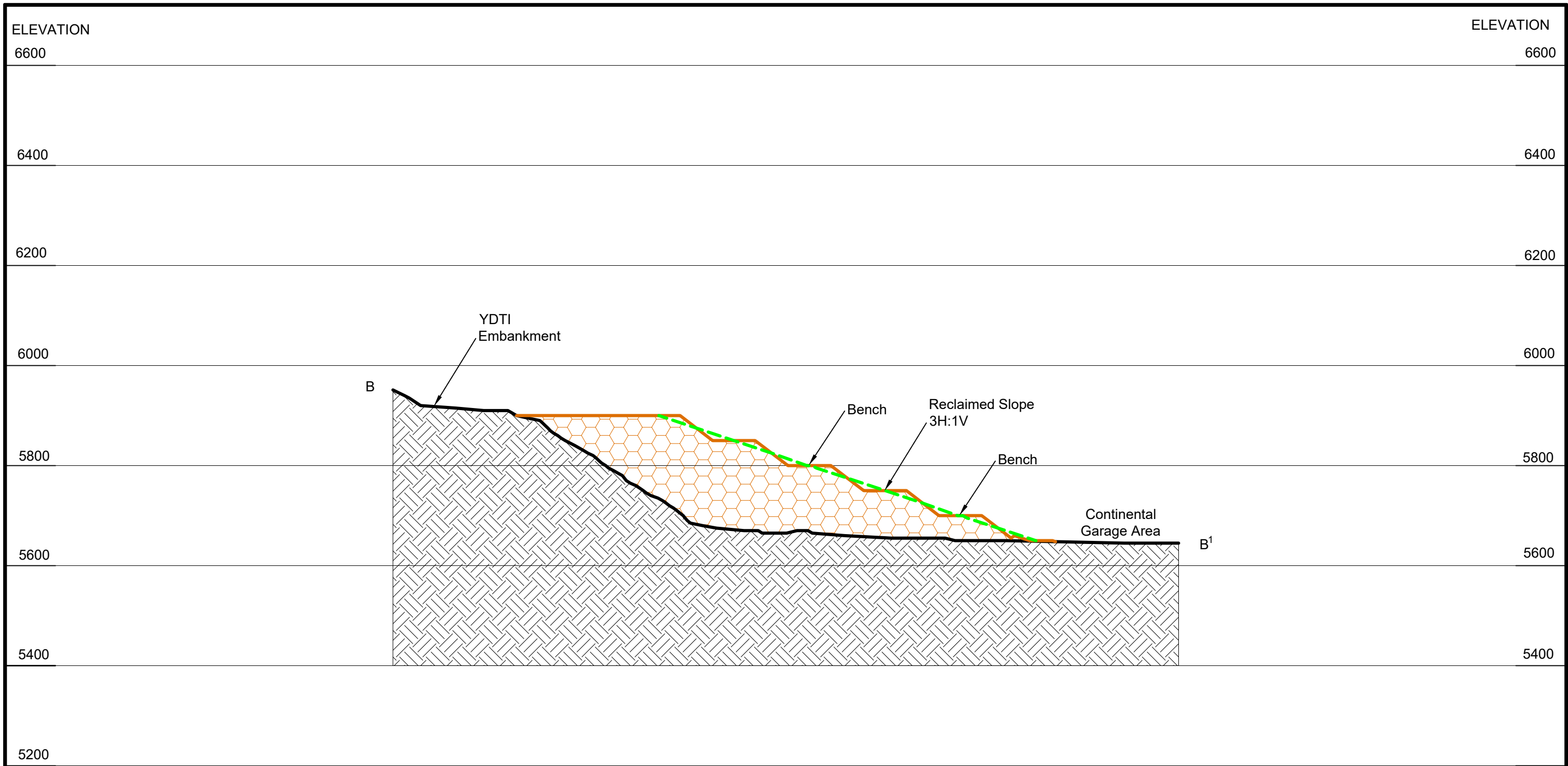
Note: Reclaimed bench locations are approximate and would be revised pending approval of subsequent lifts.




Preliminary Design

 **Montana Resources**
CONTINENTAL MINE

Figure 5
Cross-Section A-A¹
Horseshoe Bend Rock Disposal Site Looking North

 **WESTECH**
ENVIRONMENTAL





-  2022 TOPOGRAPHY
-  PROPOSED TOPOGRAPHY
-  RECLAIMED SLOPE



Note: Reclaimed bench locations are approximate and would be revised pending approval of subsequent lifts.

Preliminary Design

 Montana Resources CONTINENTAL MINE			
Figure 6 Cross-Section B-B ¹ Horseshoe Bend Rock Disposal Site Looking East			
 WESTECH ENVIRONMENTAL			
Dsn:	Dlt:	MR22_HsB_RDS_Sections.dwg	5/4/22